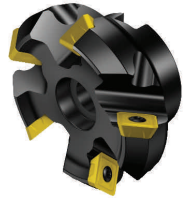
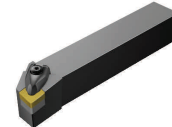
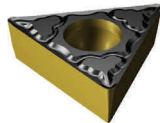
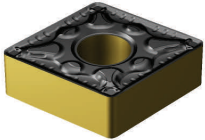


INVENTORY CLEARANCE SAVE UP TO 85% !!

INDEXABLE TOOLING



QTY AVAIL	ITEM ID	DESCRIPTION	STD. PRICE	CLEARANCE PRICE
I. Turning Inserts				
1	CCMT 433-UR 2025	INSERT	14.76	4.00
38	CNG 434T-0820 650	T-MAX CERAMIC INSERT	5.55	3.00
63	VAL CNMA 432T VC610	INSERT - VALENITE	8.82	3.00
58	CNMA 433-KR 3015	T-MAXP TURNING INSERT	10.94	3.00
60	CNMA 436 3015	T-MAXP TURNING INSERT	8.06	3.00
2	CNMM 433-PR 4225	T-MAX P TURNING INSERT	11.59	4.00
10	CNMM 542-71 015	T-MAXP TURNING INSERT	9.02	3.00
52	KTW CPGH-2151-C6G	INSERTS - KUSTOM TOOL WORKS	4.99	2.00
7	ISC DCMT 3-1-14 IC9025	INSERT - ISCAR	16.33	3.00
8	DNGA 432T-0820 690	T-MAX CERAMIC INSERT	24.17	4.00
3	DNGA 453T-0820 690	T-MAX CERAMIC INSERT	13.48	4.00
70	DNMA 433-KR 3015	T-MAX P TURNING INSERT	16.04	4.00
10	DNMG 443-15 1025	T-MAXP TURNING INSERT	8.01	3.00
7	DNMG 443-MR 4025	T-MAX P TURNING INSERT	16.97	5.00
8	DNMG 444-15 415	INSERT	8.01	3.00
4	DNMM 442-QR 4015	T-MAX P TURNING INSERT	16.97	5.00
2	DPMT 2(1.5)2-PM 4025	COROTURN 111 INSERT	10.30	4.00
2	RNMG 43 425	T-MAXP TURNING INSERT	8.34	3.00
3	SCMT 433-KR 3210	COROTURN 107 INSERT	15.44	4.00
20	SNG 433T-0820 1690	T-MAX CERAMIC INSERT	18.08	3.00
10	SNG 434T-0320 620	T-MAX CERAMIC INSERT	3.69	3.00
9	SNMG 432-MF 4025	T-MAX P TURNING INSERT	10.94	4.00
20	SNMG 432-PF 4025	T-MAX P TURNING INSERT	10.94	4.00
68	SNMG 434 415	T-MAXP TURNING INSERT	9.51	4.00
10	SNMG 542-QM 4225	T-MAX P TURNING INSERT	18.32	5.00
10	SNMG 543-PM 4225	T-MAX P TURNING INSERT	18.32	5.00
50	SNMG 543-PR 4025	T-MAX P TURNING INSERT	16.68	5.00
20	SNMG 543-PR 4025	T-MAX P TURNING INSERT	16.68	5.00
30	SNMM 433 135	T-MAXP TURNING INSERT	4.61	2.00
20	SNMM 433 1025	T-MAXP TURNING INSERT	4.61	2.00
5	SNMM 644-PR 4015	T-MAX P TURNING INSERT	22.85	6.00
10	SPG 424 H13A	T-MAX TURNING INSERT	14.15	2.00



INVENTORY CLEARANCE SAVE UP TO 85% !!



QTY AVAIL	ITEM ID	DESCRIPTION	STD. PRICE	CLEARANCE PRICE
10	HOR SPG 432 314APS/320APS	TURNING INSERT - HORIZON	8.65	3.00
10	SPG 433 435	T-MAX TURNING INSERT	20.18	4.00
5	TCGT 2(1.5)1R-K H13A	T-MAX U TURNING INSERT	12.69	3.00
8	TCGT 2(1.5)1-UM 525	T-MAXU TURNING INSERT	13.87	3.00
4	TCMT 1.8(1.5)1-KF 3005	COROTURN 107 INSERT	8.24	3.00
6	TCMT 1.8(1.5)1-PM 5015	COROTURN 107 INSERT	8.24	3.00
10	VAL TNEA 2.522 VC7	INSERT - VALENITE	4.39	3.00
5	TNG 433T-0820 650	T-MAX CERAMIC INSERT	7.04	3.00
20	CYN TNGA 433 HC2	CERAMIC INSERT - NTK	18.85	4.00
8	MIS TNGN 16 04 08 NB905	SUMITOMO INSERT	6.00	3.00
8	TNMA 331 415	T-MAXP TURNING INSERT	6.98	3.00
10	TNMA 334 3015	T-MAXP TURNING INSERT	6.98	3.00
8	TNMA 432-KR 3215	T-MAX P TURNING INSERT	13.33	3.00
58	TNMA 433 015	T-MAXP TURNING INSERT	6.03	3.00
7	TNMG 331 015	T-MAXP TURNING INSERT	3.82	3.00
26	TNMG 331-61 525	T-MAXP TURNING INSERT	5.95	3.00
6	TNMG 332-KM 3015	T-MAXP TURNING INSERT	9.59	3.00
24	TNMG 332-PR 4005	T-MAX P TURNING INSERT	9.55	3.00
8	TNMG 332R-K 1525	T-MAX P TURNING INSERT	9.27	3.00
30	TNMG 332-SM 3015	T-MAXP TURNING INSERT	6.98	3.00
26	KEN TNMG 332UF KT125	INSERT - KENNAMETAL	5.03	3.00
2	KEN TNMG 332UF KT175	INSERT - KENNAMETAL	5.03	3.00
60	TNMG 333-MF 3015	T-MAXP TURNING INSERT	6.98	3.00
120	TNMG 333-PR 4005	T-MAX P TURNING INSERT	9.59	3.00
8	TNMG 433-PR 4215	T-MAX P TURNING INSERT	14.08	4.00
1	TNMG 433-QM 4215	T-MAX P TURNING INSERT	14.08	4.00
9	TNMM 332-QR 415	T-MAXP TURNING INSERT	6.82	3.00
38	TNMM 432 015	T-MAXP TURNING INSERT	5.36	3.00
13	TNMM 432 415	INSERT	5.36	3.00
10	TNMM 433-QR 3015	T-MAX P TURNING INSERT	11.76	3.00
104	TNMX 331-WF 4215	T-MAX P WIPER INSERT	11.80	3.00
2	TNMX 332-WM 3215	T-MAX P WIPER INSERT	11.80	3.00
20	MIC TPG 322 M100	INSERT - MICRO 100	8.05	3.00
5	CIR TPGH 321HA CG6	INSERT - CIRCLE MACHINE	14.68	3.00
49	TPU 431 015	T-MAX TURNING INSERT	6.76	2.00
40	VBMT 333-PR 4005	TURNING INSERT	18.57	4.00
3	EMP VNMG 2.5-2NF IC9250	INSERT - ISCAR	13.45	3.00
1	WNGA332T0320AWG 7050	CBN INSERT	185.11	25.00
10	ISC WNMG 3-2-GN IC 9025	INSERT - ISCAR	10.31	3.00
6	WNMG 433-PR 4225	T-MAX P TURNING INSERT	12.73	4.00
II. Threading Inserts				
6	L166.0G-16MM01-200 1020	U-LOCK INSERT	21.04	4.00
1	R166.0L-16NT01-115 1020	U-LOCK INSERT	21.04	4.00
1	R166.0L-16RN01-080 1020	U-LOCK INSERT	21.04	4.00
1	R166.0L-16UN01-110 1020	U-LOCK INSERT	21.04	4.00
1	R166.0L-16UN01-240 1020	U-LOCK INSERT	21.04	4.00
4	R166-0G-16UN01-180 S10	U-LOCK THREADING INSERT EXT.	17.67	4.00



INVENTORY CLEARANCE SAVE UP TO 85% !!



QTY AVAIL	ITEM ID	DESCRIPTION	STD. PRICE	CLEARANCE PRICE
10	R166-0L-16AC01-120 1020	U-LOCK THREADING INSERT INT.	23.13	4.00
7	R166-0L-16MM01-100 S10	U-LOCK THREADING INSERT INT.	17.21	4.00
9	R166-0L-16UN01-100 S10	U-LOCK THREADING INSERT INT.	17.21	4.00
13	R166-0L-16UN01-130 S10	U-LOCK THREADING INSERT INT.	11.41	4.00
1	R166-0L-16UN01-180 S10	U-LOCK THREADING INSERT INT.	17.21	4.00
4	R166-0L-16UN01-200 S10	U-LOCK THREADING INSERT INT.	17.21	4.00
5	R166-0L-16UN01-240 S10	U-LOCK THREADING INSERT INT.	17.21	4.00
5	TLTP-4L 225	TOP LOK INSERT	23.10	3.00
5	ISC 16IRMG IC908	INSERT - ISCAR	19.31	4.00
9	T-F 16NR-8 C55H	ACME INSERT - TOOL FLO	13.61	4.00
10	TRU 571-165-34 M93	INSERT - MANCHESTER	35.52	3.00
10	ISC TIP 5MT-0.25 IC908	INSERT - ISCAR	40.34	4.00
8	T-F TNMC 43NT-10P GP6	INSERT - TOOL FLO	11.67	3.00
10	T-F TPGC 42NT 4PSTUB C6H	INSERT - TOOL FLO	12.57	4.00
10	T-F TPMA 32NV GP6	THREADING INSERT - TOOL FLO	8.86	3.00
III. Parting/Grooving Inserts				
10	MABL 3005 1025	COROCUT XS INSERT	44.90	5.00
3	MAFR 3 003 1025	COROCUT XS INSERT	44.90	5.00
150	MLPE-2532-NGC.188 4125	MINI-V GROOVING INSERT	21.43	4.00
10	N123E2-0224-0002-GF 4125	COROCUT GROOVING INSERT	24.82	4.00
10	N123J2-0600-RM 4025	COROCUT INSERT	27.11	4.00
10	N123J2-0600-RM 4125	COROCUT INSERT	25.87	4.00
8	N123J2-0600-RM 4125	COROCUT INSERT	25.87	4.00
5	N123L2-0800-0012-TM 3115	COROCUT INSERT	33.34	5.00
1	N151.2-A312-60-4G 525	T-MAX Q-CUT GROOVING INSERT	17.15	3.00
9	N151.3-500-50-4G H13A	Q-CUT INSERT	13.87	4.00
8	N151.3-A078-20-4G 235	Q-CUT INSERT	14.15	3.00
8	R123E2-0200-0502-CM 4125	COROCUT PARTING INSERT	20.62	3.00
5	R123E2-0200-1501-CS 4125	COROCUT PARTING INSERT	25.83	3.00
50	TLB-2R S10T	TOP LOK BLANK INSERT	8.53	2.00
13	TLF-6218R S6	TOP LOK INSERT	22.89	4.00
4	TLG-3142L 4125	TOP LOK INSERTS	23.40	3.00
6	TLG-3142L S6	TOP LOK INSERT	14.81	3.00
40	TLG-3189L 1015	TOP LOK INSERT	20.59	3.00
30	TLG-4189L S6	TOP LOK INSERT	17.53	4.00
7	TLGP-4189R 1125	TOP LOK INSERT	35.85	8.00
2	TLG-4219R 225	TOP LOK INSERT	24.89	4.00
6	TLG-4250L S6	TOP LOK INSERT	18.08	4.00
10	TLGP-2058L 4125	TOP LOK INSERTS	19.46	3.00
30	TLGP-3047L-MOD 4125	TOP LOK INSERT MODIFIED	24.58	3.00
10	TLGP-3094L 1015	TOP LOK INSERT	24.50	3.00
1	TLGP-4125L 4125	TOP LOK INSERTS	29.32	4.00
3	TLGP-4125R 4125	TOP LOK INSERTS	29.32	4.00
1	TLGP-4189L 4125	TOP LOK INSERTS	29.32	4.00
3	TLGP-4250R 4125	TOP LOK INSERTS	29.32	4.00
8	TLR-3047R H13A	TOP LOK INSERT	19.90	3.00
3	TLRP-3031L 1125	TOP LOK INSERT	27.38	3.00



INVENTORY CLEARANCE SAVE UP TO 85% !!



QTY AVAIL	ITEM ID	DESCRIPTION	STD. PRICE	CLEARANCE PRICE
7	TLTC-3R12I 225	TOP LOK INSERT	21.53	3.00
1	TLU-3094L H13A	TOP LOK INSERT	25.07	3.00
1	TLU-3125R H13A	TOP LOK INSERT	25.07	3.00
5	STF 52005-T-25	SG3097R-BN350 .097" W GROOVING INSERT	38.57	4.00
5	STF 52005-T-26	SG3062RSPC-BN350 CBN FULL RAD GROOVER	38.57	4.00
8	HBR 5251-AR17	INSERT - H.B. ROUSE	12.11	3.00
2	TRU 582-106-34	INSERT - TOOLS R US	25.76	3.00
6	T-F BNGL-062W	GP4 GROOVING INSERT - TOOL FLO	18.84	3.00
165	T-F FLG 3110R GP50	GROOVING INSERT - TOOL FLO	22.26	3.00
8	ISC G1P1 4.00 E0.40 IC328	INSERT - ISCAR	32.75	3.00
4	ISC GFN 3J IC328	INSERT - ISCAR	16.96	3.00
14	ISC HFPL-3003 IC20	INSERT - ISCAR	20.41	3.00
18	ISC HFPR 3003 IC20	INSERT - ISCAR	20.86	3.00
5	CYN VDB 250R-B HC2	CERAMIC INSERT - NTK	41.33	4.00
20	T-F VDB-125-A015 C25	INSERT - TOOL FLO	23.75	4.00
IV. Milling Inserts				
7	215.3-06 11 40-AAH H10F	MILLING INSERT	17.07	4.00
20	CDE 322 R02 H13A	T-LINE INSERT	13.37	3.00
2	PHH 628.012.0.200 T125	INSERT - HORN USA	88.24	5.00
4	KEN LNEU1245R08 KC725M	INSERT - KENNAMETAL	20.92	3.00
30	N331.1A-05 45 08M-KM3020	COROMILL 331 INSERT	11.59	3.00
150	N331.1A-05 45 08M-KM3020	COROMILL 331 INSERT	11.59	3.00
8	N331.1A-08 45 08E-KL3020	COROMILL INSERT	15.40	3.00
30	N331.1A-084508H-WM 235	MILLING INSERT	14.05	3.00
10	N331.1A-115008E-WM 3015	INSERT	16.33	4.00
10	N331.1A-115008H-WM GC-A	MILLING INSERT	11.16	4.00
4	PHH R114.0300.00 TN35	INSERTS - HORN USA	22.62	4.00
20	R215.44-090208M-WH 320	MILLING INSERT	9.66	2.00
2	R215.44-15T308M-WH 4040	U-MAX INSERT	13.73	2.00
30	R215.44-15T316M-WL 320	MILLING INSERT	11.08	2.00
80	R215.44-15T324M-WL 320	MILLING INSERT	10.48	2.00
3	R215.45-0709 S6	MILLING INSERT	10.11	2.00
8	R216.2-080204-2A 235	T-MAX SCREW CLAMP INSERT	10.98	2.00
9	R216.2-15 T3 12-2 HM	T-MAX SCREW CLAMP INSERT	10.98	4.00
1	R216.2-17 03 08-1 S6	MILLING INSERT	16.04	2.00
10	R216.24-13T3100-AB H13A	MILLING INSERT	25.38	2.00
7	R245-12T3E-W 3020	COROMILL 245 WIPER INSERT	20.62	4.00
7	R290-12T308E-KL H13A	COROMILL 290 INSERTS	13.58	3.00
2	R290-12T308E-ML 2030	COROMILL 290 INSERT	17.47	6.00
3	R300-1240M-MH 2030	CM 300 INSERT	10.05	3.00
7	RCKT 13 04 00-WM 530	T-MAX MILLING INSERT	9.41	2.00
10	RCMT 16 06 M0-WL H13A	T-MAX U TURNING ISNERT	13.51	3.00
53	RCMT 64 M0 SM30	T-MAXU TURNING INSERT	17.04	5.00
9	RCMT 64 M0-WL 235	T-MAX U TURNING INSERT	20.21	3.00
10	VAL SD-422P 3P VIN	INSERT - VALENITE	21.21	3.00
70	SEK 43A 320	MILLING INSERT	9.96	4.00
60	SMK 42E2R 320	MILLING INSERT	9.06	2.00



INVENTORY CLEARANCE SAVE UP TO 85% !!



QTY AVAIL	ITEM ID	DESCRIPTION	STD. PRICE	CLEARANCE PRICE
60	SMM 42E2R 3015	MILLING INSERT	3.74	3.00
30	TNKF 12 04 AN-65 HM	MILLING INSERT	11.01	3.00
20	TNMF 12 04 AN-CA 3015	MILLING INSERT	6.42	3.00
20	TPA 22P1 HM	MILLING INSERT	9.13	2.00
10	TPA 22P1 S6	MILLING INSERT	9.13	2.00
4	TPA 22P1 SM30	T-MAX MILLING INSERT	12.41	2.00
75	TPGN 11 02 08 SM30	T-MAX TURNING INSERT	6.87	2.00
14	TPM 2(1.5)2 GCA	T-MAX MILLING INSERT	6.87	2.00
V. Drilling Inserts				
10	MIS M1332L716	DRILLING INSERT - METCUT	7.05	2.00
20	MIS M1332R716	DRILLING INSERT - METCUT	7.05	2.00
10	MIS M1432R716	DRILLING INSERT - METCUT	8.03	2.00
1	WCMX 05 03 08 R-51 S6	T-MAXU DRILLING INSERT	6.15	3.00
VI. Tool Holders				
2	HBR 7-2525-L	HOLDER - H.B. ROUSE	82.07	25.00
1	C4-DCLNR-27050-12-SP	COROMANT CAPTO CUTTING UNIT	258.00	25.00
1	C4-DTFNL-27050-22	CAPTO CUTTING UNIT	269.00	25.00
1	C4-PTFNL-13080-11-SP	COROMANT CAPTO CUTTING UNIT	376.00	25.00
1	C4-PTFNR-13080-11-SP	COROMANT CAPTO CUTTING UNIT	376.00	25.00
5	C4-SDUCR-18090-07X-SP	COROMANT CAPTO CUTTING UNIT	369.00	25.00
4	C5-TLER-35060-3	COROMANT CAPTO CUT UNIT	365.00	25.00
1	CRGCR 20 4D	TOOL HOLDER	166.95	25.00
1	CTFPR 12 3A	T-MAX S TOOLHOLDER	77.28	25.00
1	CTGPR 12 2A	T-MAX S TOOLHOLDER	77.28	25.00
1	DCLNL 3232 P19-1	TOOL HOLDER	125.40	25.00
7	DDJNR 24 4D-W	RC CLMP. TOOLHOLDER	206.00	25.00
3	MDJNL 103A-1-W	TOOL HOLDER	105.00	20.00
1	MDJNL 164D-W	TOOL HOLDER	123.00	25.00
1	MSRNL 12 3B	T-MAX M TOOLHOLDER	85.05	25.00
2	MTGNL 164C-W	TOOL HOLDER	123.00	15.00
1	MTGNR 24 5E	T-MAX M TOOLHOLDER	109.20	25.00
2	MTRNL 16 4C	T-MAX M TOOLHOLDER	91.67	25.00
1	MTRNR 24 5E	T-MAX M TOOLHOLDER	106.05	25.00
1	MTSNL 12 3B	T-MAX M TOOLHOLDER	85.05	25.00
1	MTSNR 10 3A	T-MAX M TOOLHOLDER	74.97	25.00
1	MTTNL 12 3B	T-MAX M TOOLHOLDER	85.05	25.00
1	MTTNR 24 5D	T-MAX M TOOLHOLDER	106.05	25.00
2	N176.0-1616-8	T-MAX P TOOLHOLDER	73.80	25.00
1	PCLNR 85-4D	T-MAX P TOOLHOLDER	89.04	25.00
1	RF151.2-20-25	T-MAX Q-CUT TOOLHOLDER	137.55	25.00
1	RG151.2-2525-25	T-MAX Q-CUT TOOLHOLDER	120.75	25.00
1	SDUCR D20-3	T-MAX U TOOLHOLDER	393.00	25.00
VII. Boring Bars				
1	470-340400	ANTI-VIBRATION BAR	955.93	160.00
2	C3.391-68A-2-026084A	DUOBORE BAR	661.00	50.00
1	C8-391.68A-07-080060C	DUOBORE BAR	1059.00	50.00
1	D-T DDIBB-12-3C	BORING BAR - DORIAN TOOL	119.95	30.00



INVENTORY CLEARANCE SAVE UP TO 85% !!



QTY AVAIL	ITEM ID	DESCRIPTION	STD. PRICE	CLEARANCE PRICE
1	MC-CLHOL-5105	MINI V CARBIDE BAR	741.00	25.00
VIII. Endmills / Milling Cutters				
1	R331.52-203R38MML	COROMILL SIDE & FACEMILL	2403.00	100.00
1	RA215.24-32MN32-19L	U-MAX ENDMILL	258.30	50.00
1	RA215.44-32MN32-32C	U-MAX LONG EDGE MILLING CUTTER	825.00	50.00
21	S215-367547-1620	2.7MM SPEC. PLURA ENDMILL	65.60	5.00
IX. Drills				
7	R415.5-0780-50-8C1 1020	COROMANT DELTA C DRILL	164.00	25.00
2	R416.2-0320C6-31-W	COROMANT U DRILL	724.00	25.00
X. Misc. Steel				
1	151.2-25D-60	T-MAX Q-CUT BLADE	76.55	25.00
2	151.2-L21C-D01-40	T-MAX Q-CUT FACEGROOVE BLADE	154.35	25.00
1	151.2-L25C-D02-40	T-MAX Q-CUT FACEGROOVE BLADE	154.35	25.00
1	3580379	COUPLING REPAIR KIT	415.00	100.00
1	A391.10-38 80 030	VARILOCK SIDE & FACEMILL	349.59	30.00
1	C5-A391.05-38 045	COROMANT CAPTO ADAPTER	335.00	25.00
3	C5-A391.20-31 085	COROMANT CAPTO ADAPTER	375.00	25.00
1	R416.3-123 067 30	TRUBORE SLIDE	654.00	65.00
1	R416.3-124 053 25	TRUBORE SLIDE	598.00	25.00
1	TMA-5M	NMTB TMA FACEMILL ARBOR	305.00	25.00